

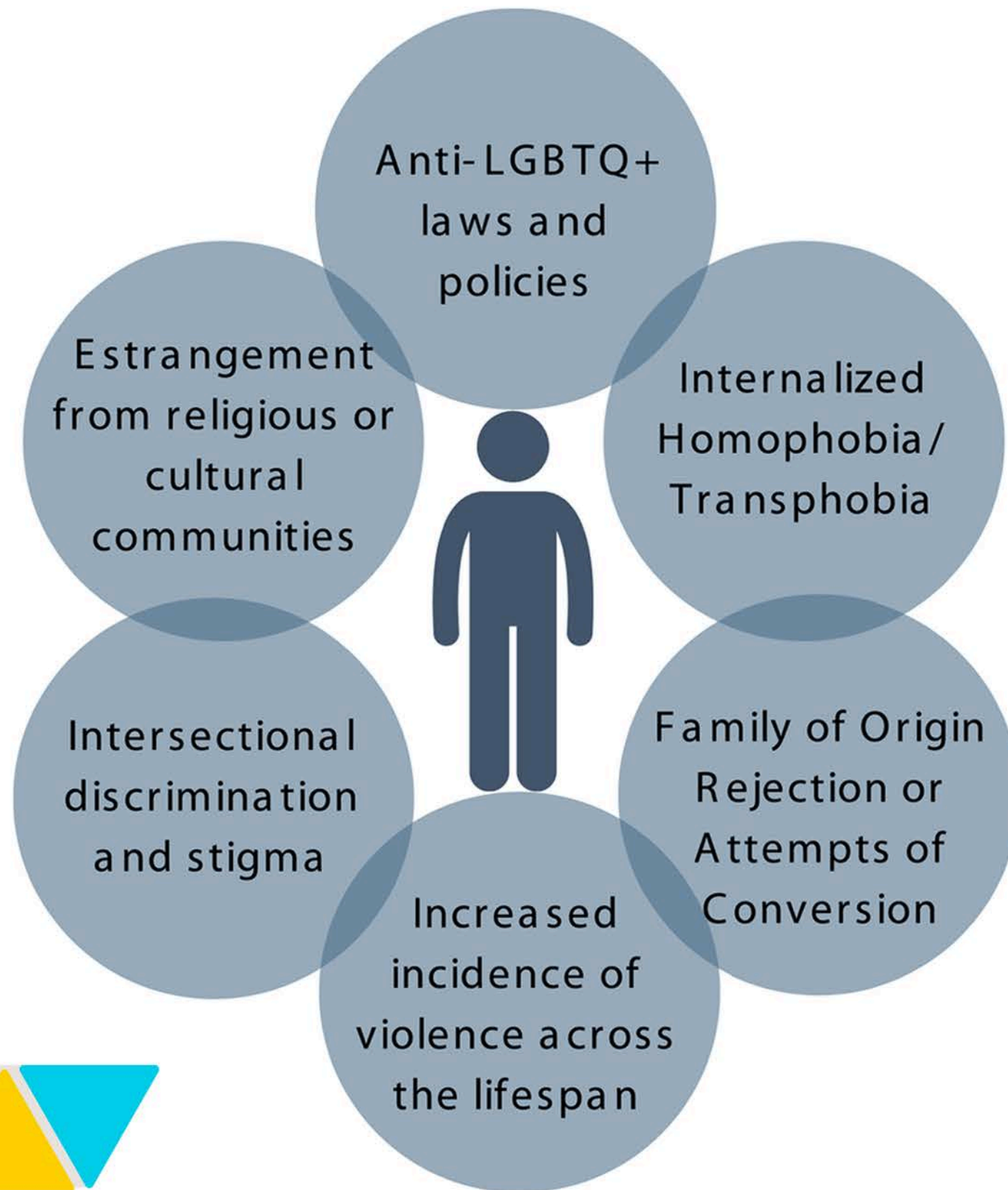


"It would be incredible to have queer-centric hospitals or clinics where people can walk in and see healthcare providers that look like them, value their values, teach them about their queer bodies in ways that straight providers can't." — Sepsis Alliance

Capstone Project

Kirstin Lillie

RESEARCH



Why does this community have poorer healthcare outcomes?



RESEARCH

The impact of discrimination and stigma amongst the LGBTQ+ community:

LGBTQ+ individuals are more likely to experience discrimination in healthcare and experience adverse consequences, including poorer overall health outcomes, as a result.

LGBTQ+ adults are twice as likely to report negative experiences while receiving healthcare.

Compared to their peers, LGBTQIA2S+ individuals experience worse outcomes across several measures of mental health and wellbeing.

More likely to not seek care or switch health care providers, causing their health to get worse.

Have less comfort asking questions and feel they must “prepare for” or mitigate unfair treatment.



AREAS OF FOCUS

SENSORY

- *Texture*
- *Color*
- *Light*
- *Balance*

SAFETY

- *Signage*
- *Damping*
- *Sightlines*
- *Wayfinding*

COMFORT

- *Color*
- *Water*
- *Sound*

HEALTING

- *Nature*
- *Color*
- *Daylight*

AUTONOMY

- *Control*
- *Privacy*

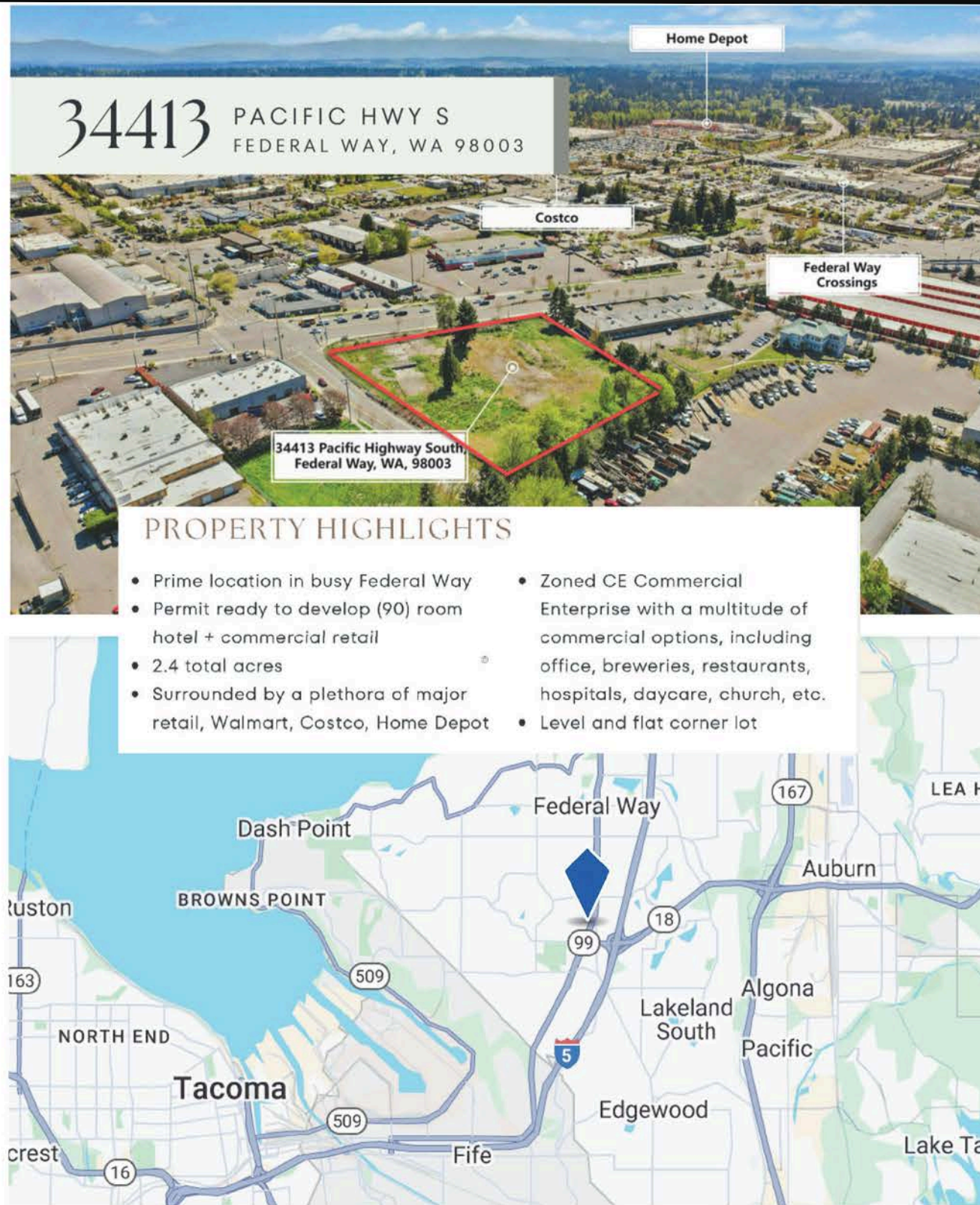


MISSION STATEMENT

*To create a healing environment for the LGBTQ+ community
where individuals feel safe and empowered on their healing journey.*



SITE LOCATION



A large vacant lot in the Pacific Northwest will be the future home of Kaleidoscope Healthcare. This is a prime, large-lot location for an LGBTQ+ clinic between Seattle and Tacoma, near the I-5 and WA-167 corridor. This area offers accessible, central access for residents in both cities, substantial acreage for facility needs, and proximity to the Kent Valley, balancing affordability with accessibility.

2.44 ACRES
PARCEL: 202104-9109
ZONING: BC, Federal Way - CE Commercial Enterprise



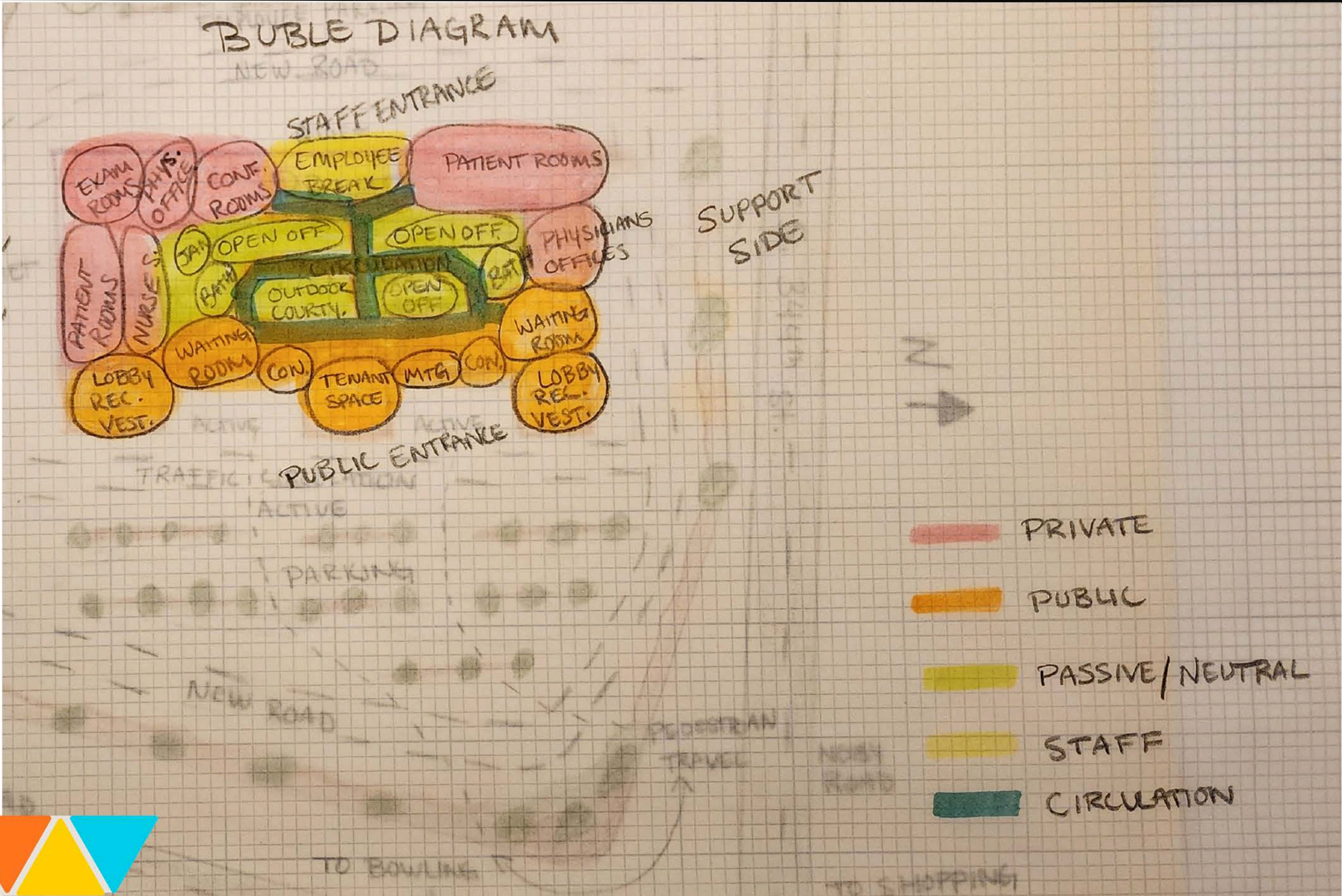
SITE ANALYSIS



SITE ANALYSIS



BUBBLE DIAGRAM

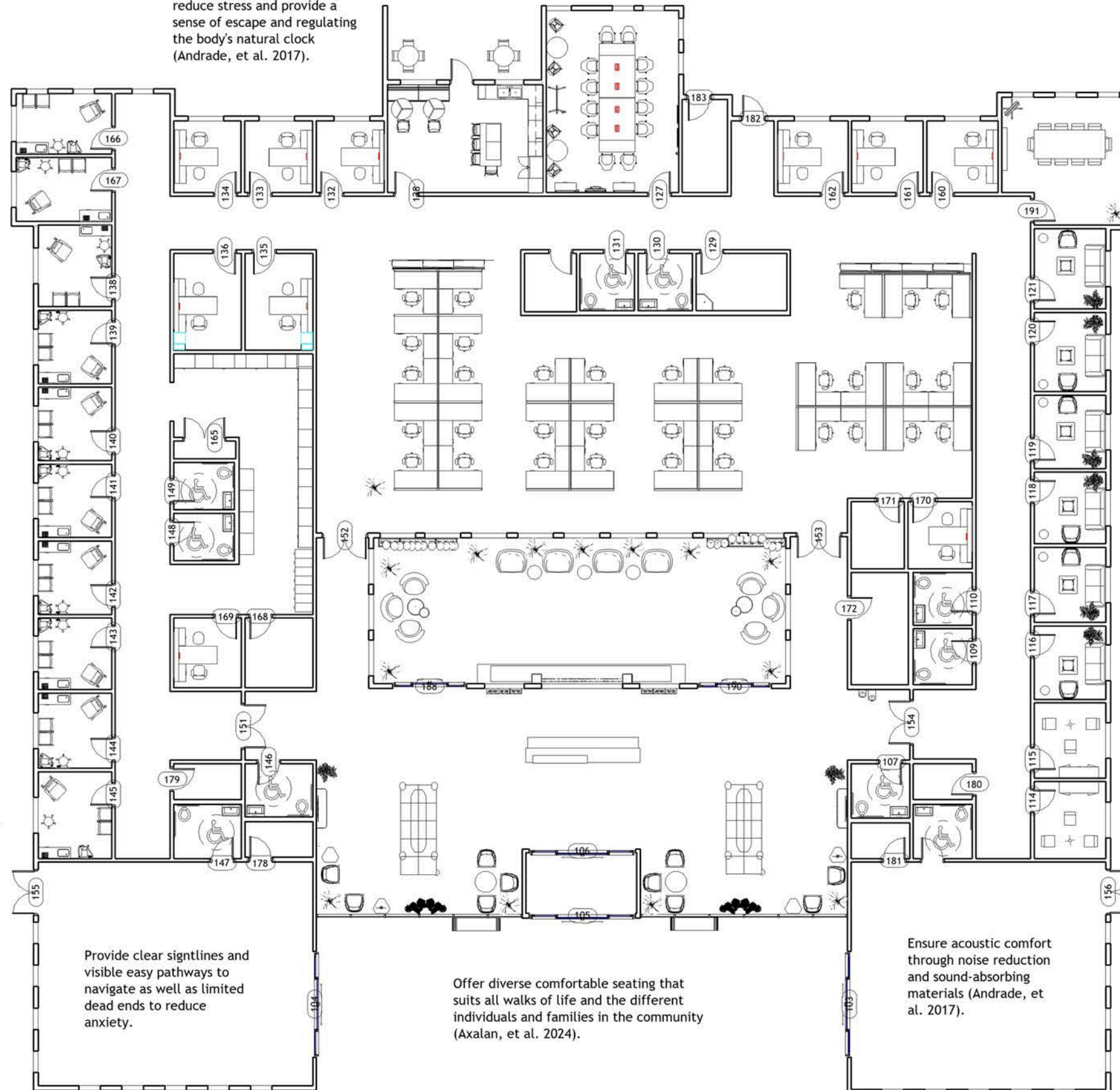


FLOOR PLAN



FLOOR PLAN

Incorporate windows in darker areas such as hallways to reduce stress and provide a sense of escape and regulating the body's natural clock (Andrade, et al. 2017).



Use materials and colors that mimic nature to reduce stress. Plants and water in a space provide a connection to the outside world (Andrade, et al. 2017).

Provide clear sightlines and visible easy pathways to navigate as well as limited dead ends to reduce anxiety.

Offer diverse comfortable seating that suits all walks of life and the different individuals and families in the community (Axalan, et al. 2024).

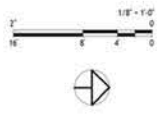
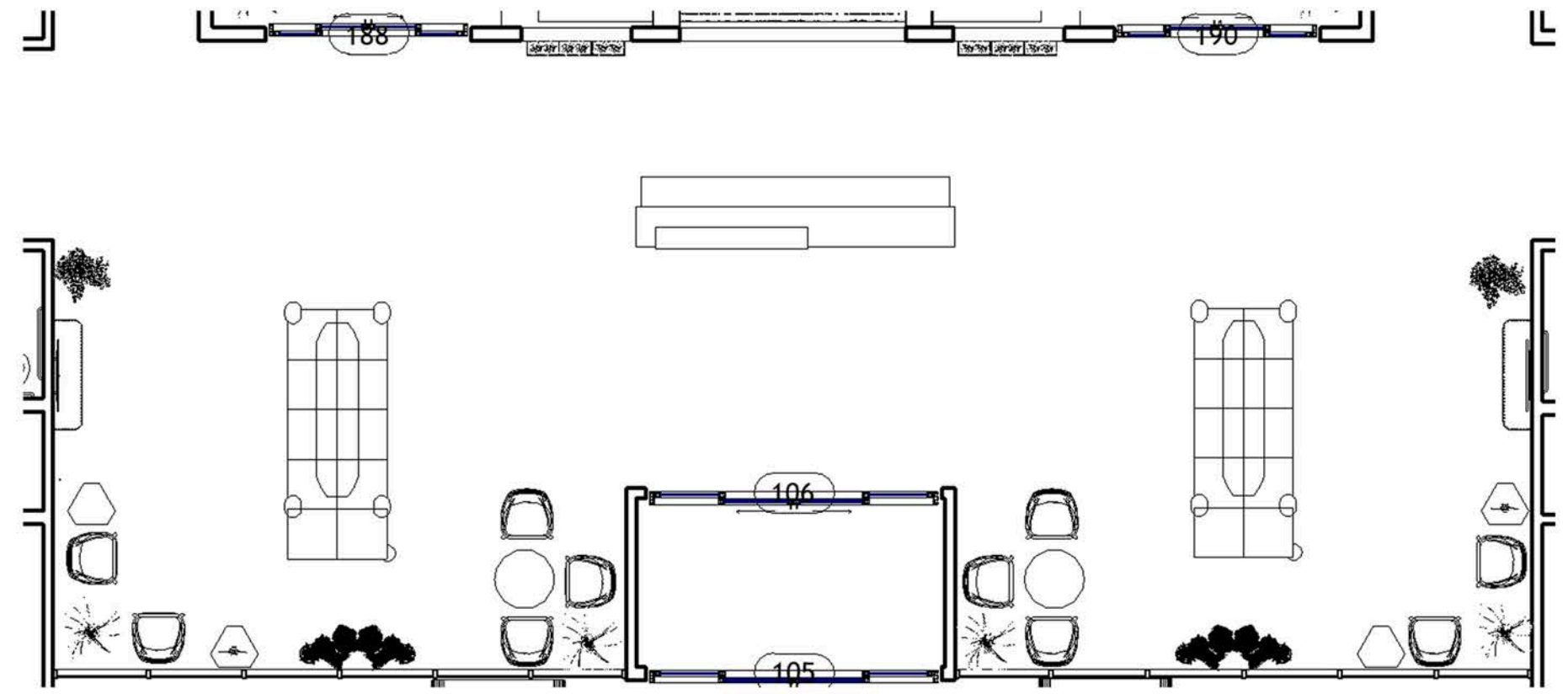
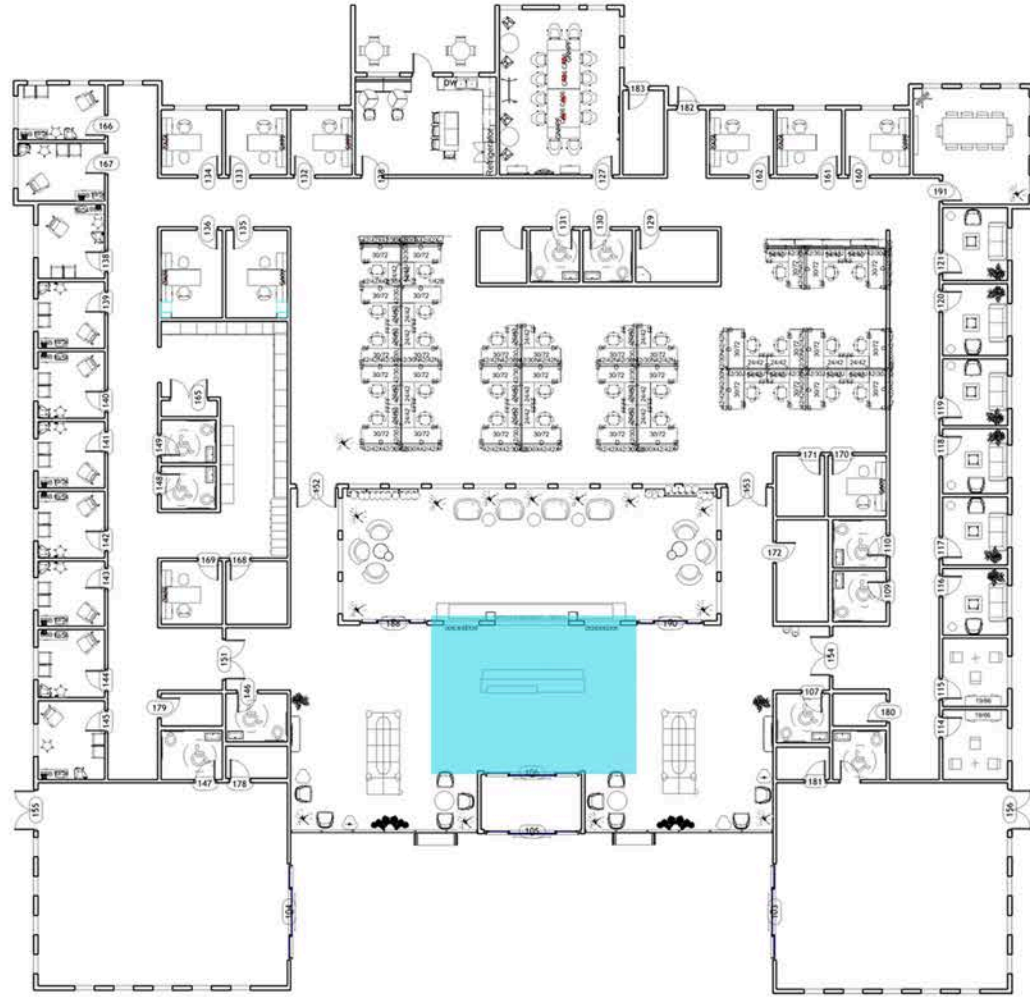
Ensure acoustic comfort through noise reduction and sound-absorbing materials (Andrade, et al. 2017).

Allow patients the ability to take control and provide ways for them to adjust lighting and room temperature (Andrade, et al. 2017).

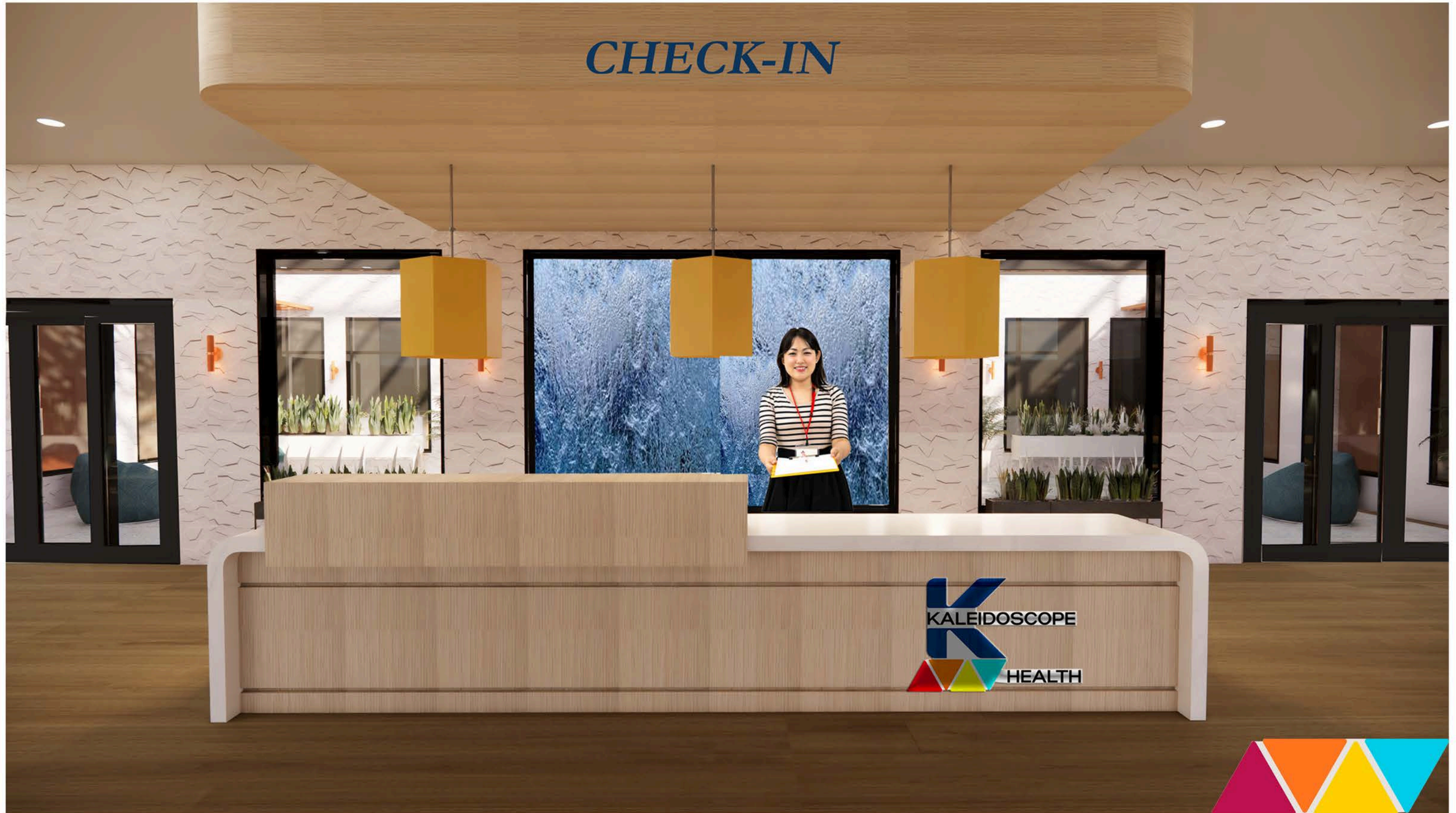
Display of visual indicators of support and safety (signage), provide patient privacy through private kiosks at check in (Fahad, et al. 2024).



LOBBY & RECEPTION AREA



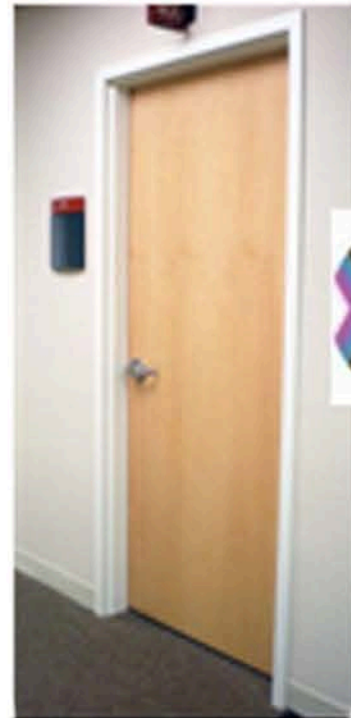
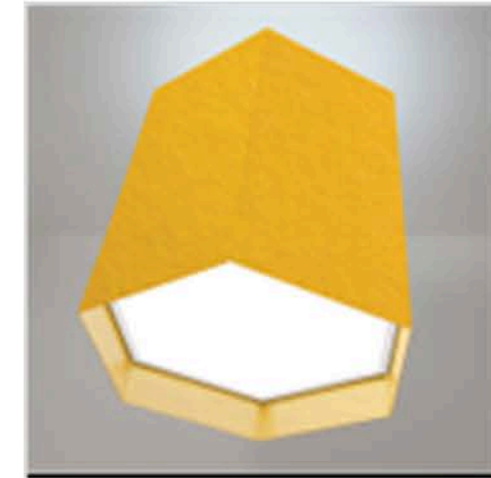
LOBBY & RECEPTION AREA



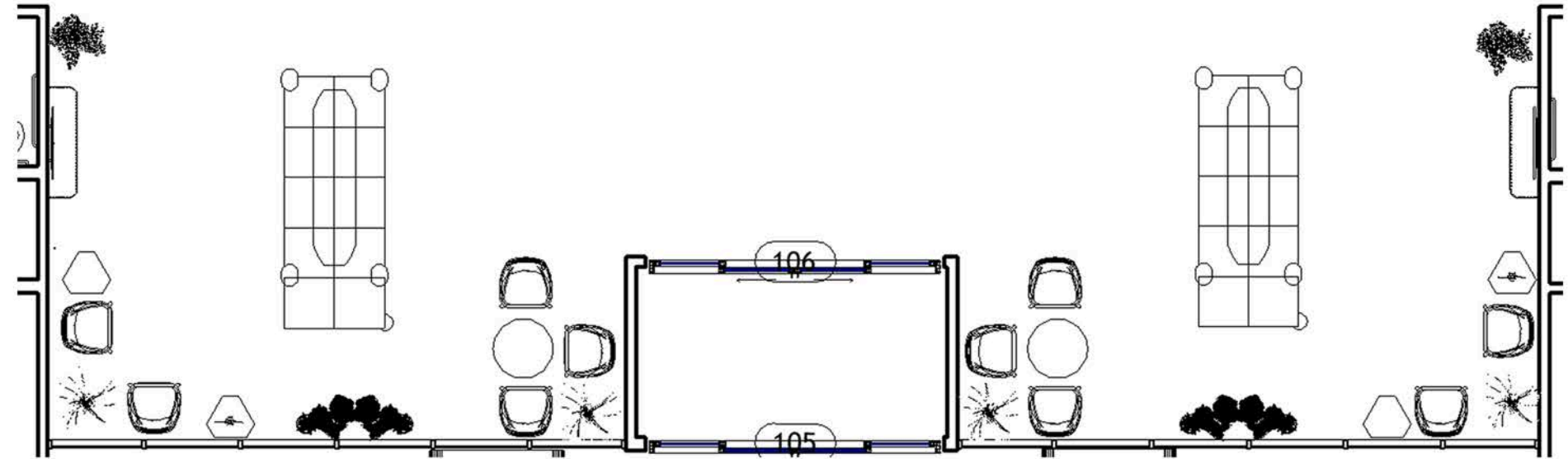
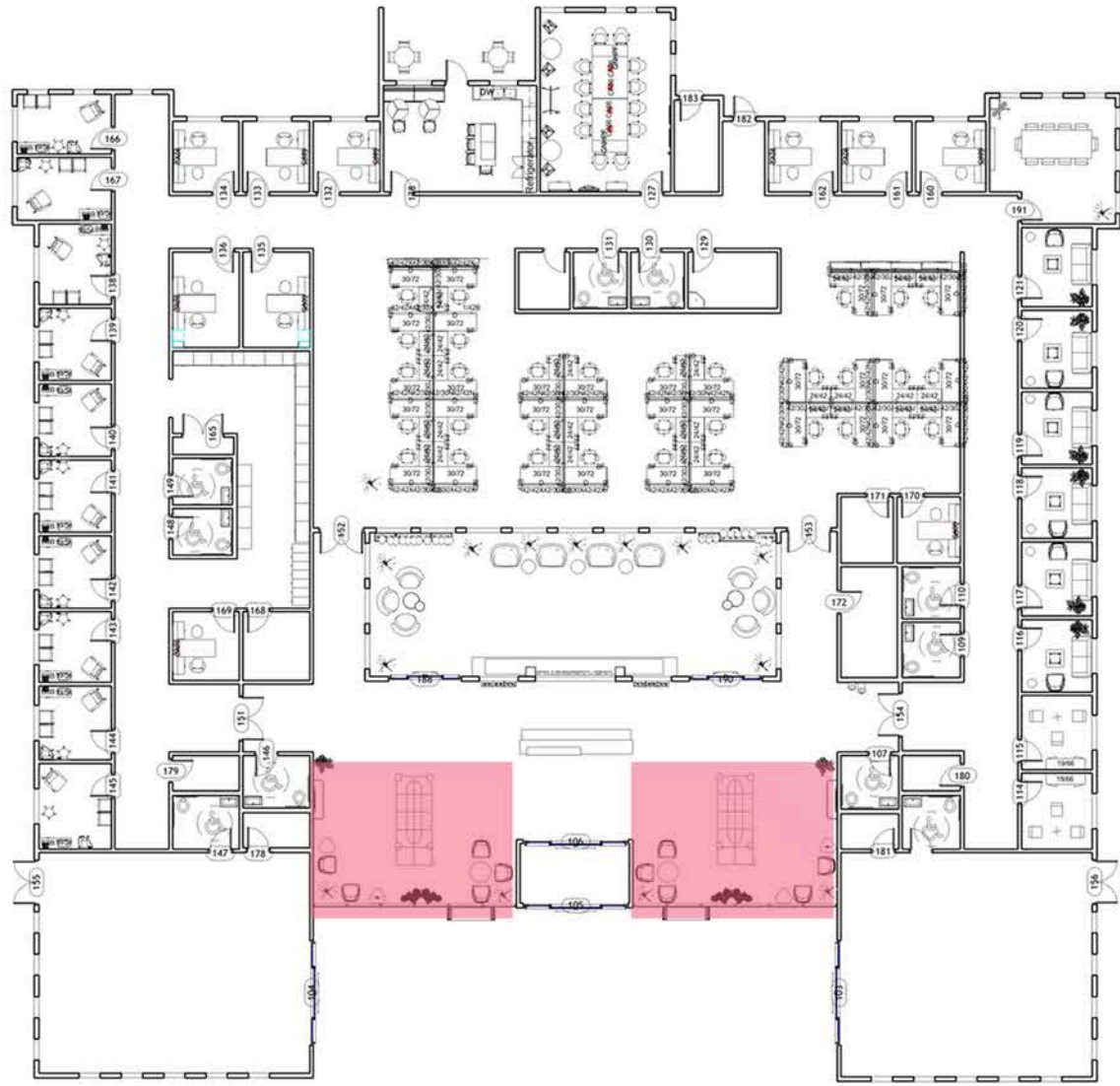
LOBBY & RECEPTION AREA



LOBBY & RECEPTION FF&E



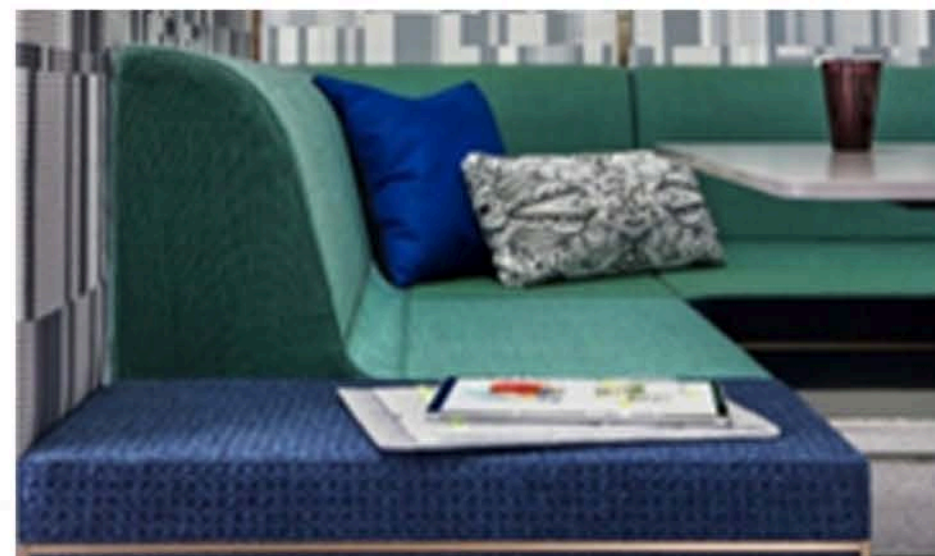
WAITING ROOM



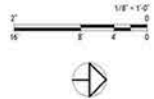
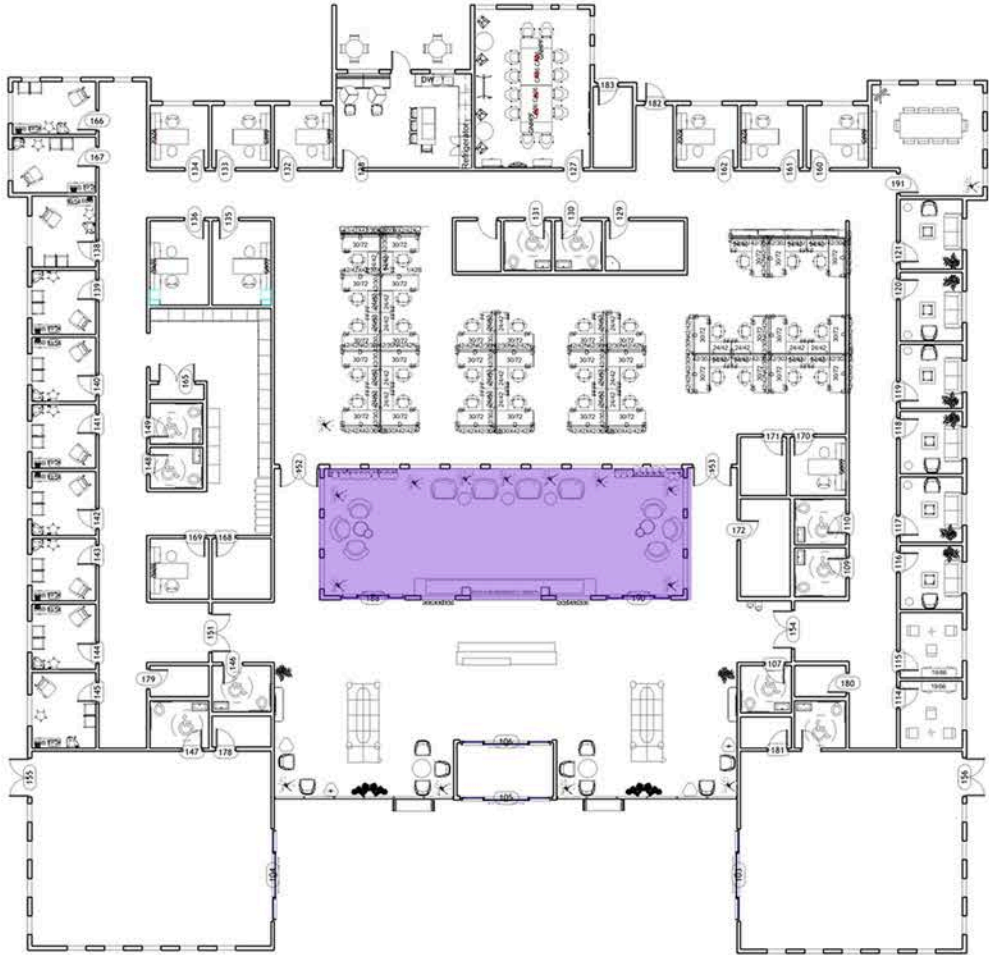
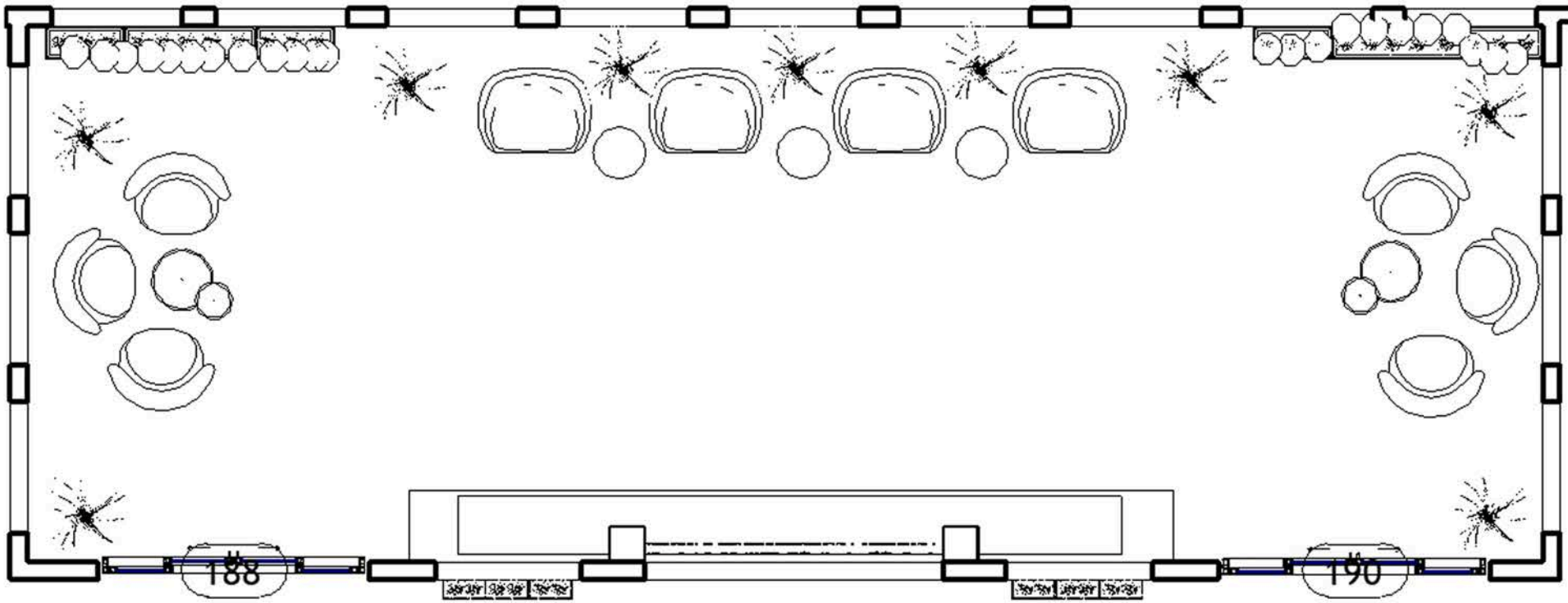
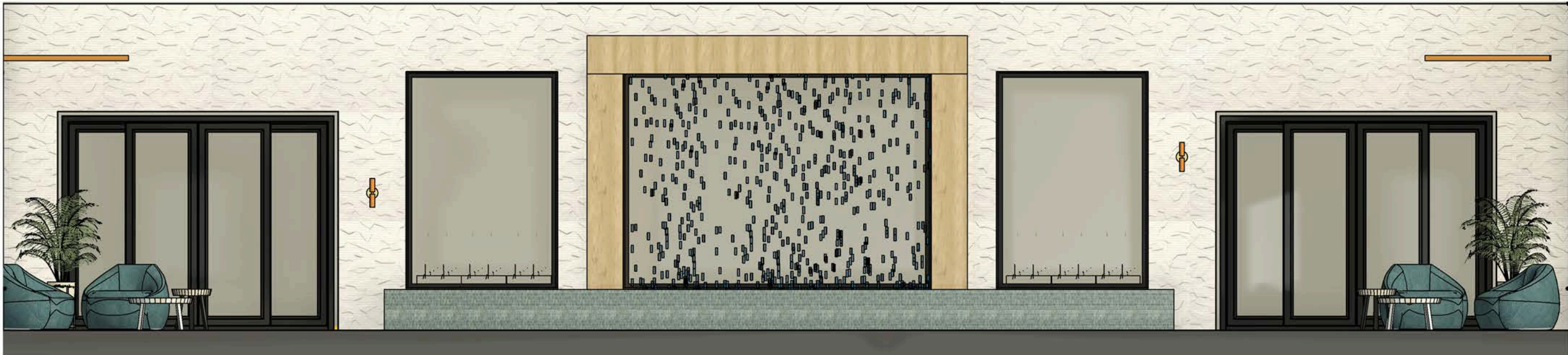
WAITING ROOM RENDERING



WAITING ROOM FF&E



COURTYARD AREA



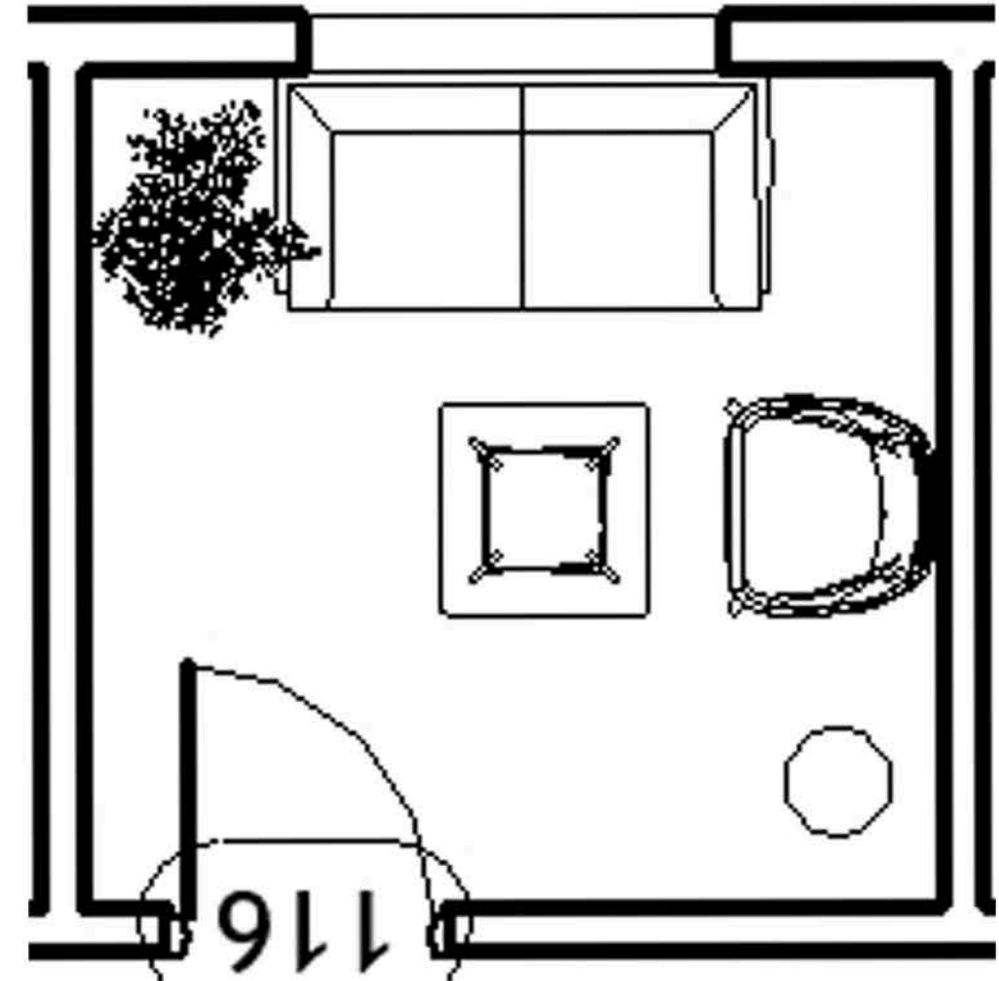
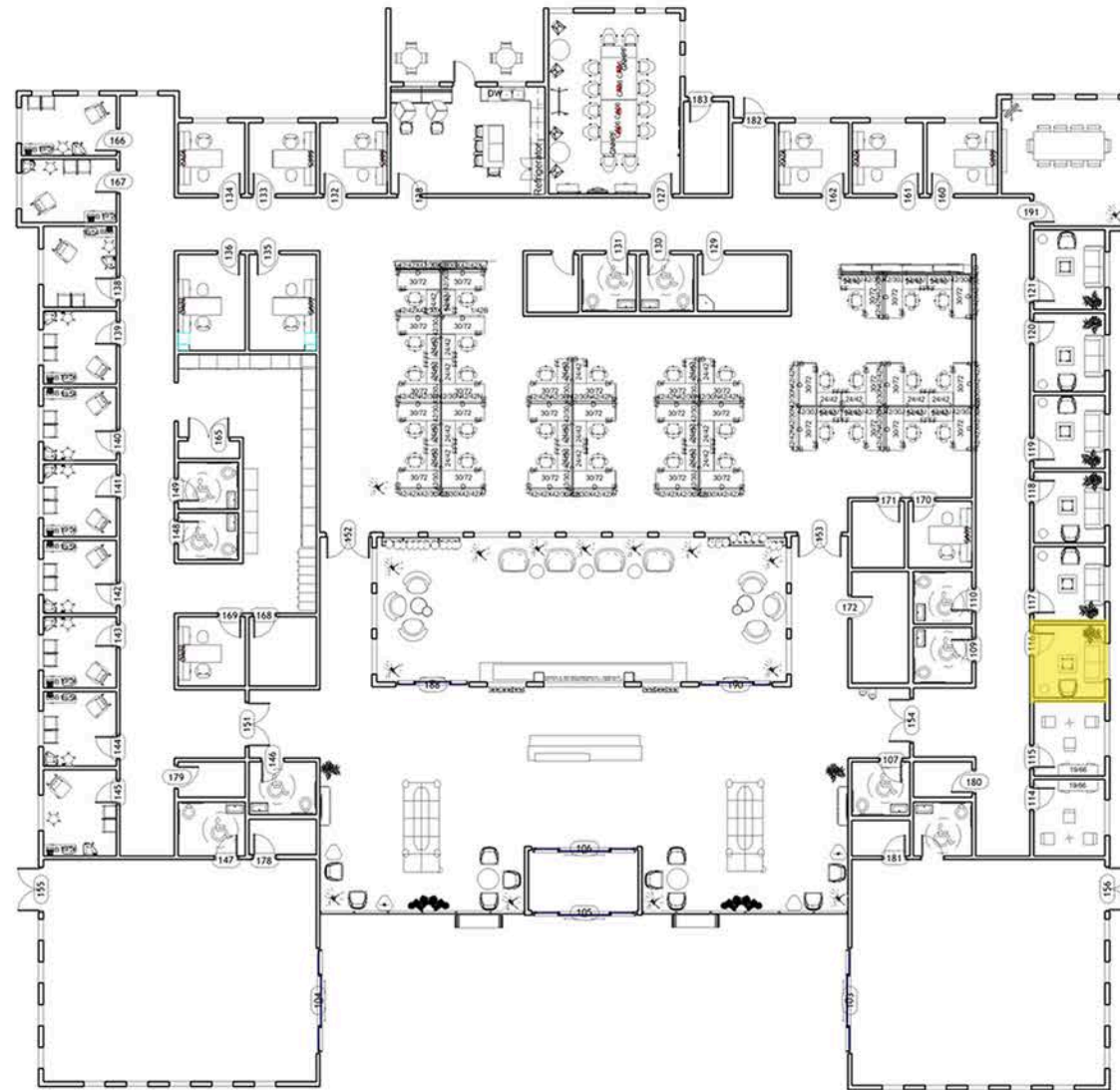
COURTYARD RENDERING



COURTYARD FF&E



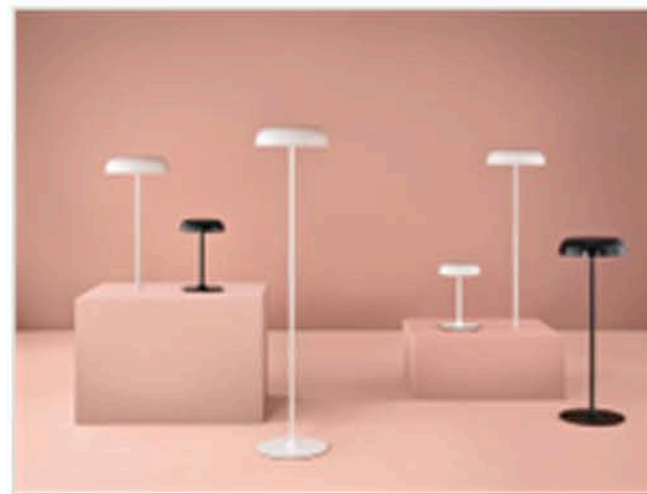
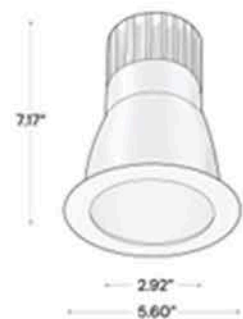
PATIENT ROOM



PATIENT ROOM RENDERING



PATIENT ROOM FF&E



REFERENCES

Andrade, C.C., Devlin, A.S., Pereira, C.R., Lima, M.L. (2017). Do the hospital rooms make a difference for patients' stress? A multilevel analysis of the role of perceived control, positive distraction, and social support, *Journal of Environmental Psychology*, Volume 53, Pages 63-72, ISSN 0272-4944.

Apodaca C., Casanova-Perez, R., Bascom, E., Mohanraj, D., Lane, C., Vidyarthi, D., Beneteau, E., Sabin, J., Pratt, W., Weibel, N., Hartzler, A.L., (2022). Maybe they had a bad day: how LGBTQ and BIPOC patients react to bias in healthcare and struggle to speak out, *Journal of the American Medical Informatics Association*, Volume 29, Issue 12, December 2022, Pages 2075–2082, <https://doi.org/10.1093/jamia/ocac142>

Axalan, M., (2024). Queer Public Architecture: Inclusive Public Space Design for Queer Communities in Hawai'i. University of Hawai'i at Manoa ProQuest Dissertations & Theses, 2024. 31242441.

Braybrook, D., Rosa, W.E., Norman, C. (2025). The inclusion of LGBTQ + people within UK health policy: a critical discourse analysis. *Int J Equity Health* 24, 88 (2025). <https://doi.org/10.1186/s12939-025-02446-x>

Christian, L.M., Cole, S.W., McDade, T., Pachankis, J. E., Morgan, E., Strahm, A., Kamp Dush, C.M., (2021). A biopsychosocial framework for understanding sexual and gender minority health: A call for action, *Neuroscience & Biobehavioral Reviews*, Volume 129, Pages 107-116, ISSN 0149-7634.

Chu, A., Lin, J. S., Moontasri, N. J., Hammouri, Q., Balch, S.J. (2022). LGBTQ+ in Orthopaedics: Creating an Open and Inclusive Environment. *Journal of the American Academy of Orthopaedic Surgeons* 30(13):p 599-606. DOI: 10.5435/JAAOS-D-20-01268

Coleman, E., Radix, A. E., Bouman, W. P., Brown, G. R., de Vries, A. L. C., Deutsch, M. B., Ettner, R., Fraser, L., Goodman, M., Green, J., Hancock, A. B., Johnson, T. W., Karasic, D. H., Knudson, G. A., Leibowitz, S. F., Meyer-Bahlburg, H. F. L., Monstrey, S. J., Motmans, J., Nahata, L., Nieder, T. O., ... Arcelus, J. (2022). Standards of Care for the Health of Transgender and Gender Diverse People, Version 8. *International journal of transgender health*, 23(Suppl 1), S1–S259.

Dalton, B. (2024). Paul B. Preciado's queer hospital: healthcare architectures for pleasure, transformation and subversion. *The Senses and Society*, 19(3), 337–350. <https://doi.org/10.1080/17458927.2024.2392954>

Daly, A., Champion, J. D., (2021). Creating inclusive health care environments: Health care stories from the trans population. *Journal of the American Association of Nurse Practitioners* 33(6):p 451-458, | DOI: 10.1097/JXX.0000000000000383.

Fahad, Z., Ahsan, I., (2024). Prototype Design and Amenities Clinic Development for Transgender Community. *Journal of Design and Textiles* 3(2):63-88 DOI: 10.32350/jdt.32.04.

Fu, M. X., Onanuga, S., Ye, X., Aiyappan, R., Zou, T., Smith, S., & Baptista, A. (2024). Patient voices and student insights into LGBTQ+ healthcare: a call for equitable healthcare through medical education. *Medical education online*, 29(1), 2405484. <https://doi.org/10.1080/10872981.2024.2405484>

George, M., (2023). An investigation into how social design can be used to create inclusive spaces for the LGBTQIA Community. Interior Design BA (Hons) Dissertation Submitted to the School of Design Edinburgh College of Art University of Edinburgh.

Goffnett, J.A., Call, J.B., Ciak, J.A, Medina, E.C., Clary, K.L., Ventura, R.C., Sidhu, S. (2025). Conceptualizing trans-inclusive healthcare in the United States: Environmental and interpersonal factors of healthcare provision. *SSM Health Systems*. Online. Sciencedirect.com.

Gridley, S. J., Crouch, J. M., Evans, Y., Eng, W., Antoon, E., Lyapustina, M., Schimmel-Bristow, A., Woodward, J., Dundon, K., Schaff, R., McCarty, C., Ahrens, K., & Breland, D. J. (2016). Youth and Caregiver Perspectives on Barriers to Gender-Affirming Health Care for Transgender Youth. *The Journal of adolescent health : official publication of the Society for Adolescent Medicine*, 59(3), 254–261. <https://doi.org/10.1016/j.jadohealth.2016.03.017>

Hong, Y., Cho, J. Y., Wang, Z., (2025). A study of interior design elements promoting the perception of healing considering gender and age: A multi-domain Approach. *Building and Environment*, Volume 271, 112649, ISSN 0360-1323, <https://doi.org/10.1016/j.buildenv.2025.112649>.

Khaleghimoghaddam, N. (2023). Understanding the interplay of light, color, and interior design in healthcare spaces. *Journal of Design for Resilience in Architecture & Planning*. Article Online: www.drarch.org Volume 4, Issue 2, (219-231), 2023 DOI: 10.47818/DRArch.2023.v4i2094 Copyright: The Author(s).

Markovic, L., Seiler-Ramadas, R., Grabovac, I., (2021). Experiences of Trans and Non-Binary Patients during Medical Transitioning and Associations with the Patient-Physician Relationship in Austria, *European Journal of Public Health*, Volume 31, Issue Supplement_3, October 2021, ckab164.472, <https://doi.org/10.1093/eurpub/ckab164.472>



REFERENCES

- Mudford, I. (2024). 'There's Nothing Clinical About It': LGBT Health and the Atmosphere of the Clinic. *Australian Feminist Studies*, 1–17. <https://doi.org/10.1080/08164649.2024.2333056>
- Olson, E. D., & Olson, J. (2024). Creating a Hospitality LGBTQ+ Health Care Clinic. *Journal of Hospitality & Tourism Cases*, 12(1), 33-40. <https://doi.org/10.1177/21649987241241903>
(Original work published 2024)
- Przybylski, L. (2019). From Cast-Out to Community: Identifying Barriers in Design that Keep LGBTQ+ Youth from Accessing Homeless Shelters. Rochester Institute of Technology ProQuest Dissertations & Theses, 2019. 27671386.
- Ramos N. (2021). Medical Trauma in LGBTQIA Youth: Adapting Trauma-Informed Affirming Clinical Practices. *Pediatric annals*, 50(9), e379–e383. <https://doi.org/10.3928/19382359-20210818-02>
- Sileo, K.M., Baldwin, A., Huynh, T.A., Olfers, A., Woo, J.C., Greene, S. L., Casillas, G.L., Taylor, B.S. (2022). Assessing LGBTQ+ stigma among healthcare professionals: An application of the Health Stigma and Discrimination Framework in a qualitative, community-based participatory research study. *Pub Med. Published in final edited form as: J Health Psychol*. 2022 Aug;27(9):2181–2196. doi: [10.1177/13591053211027652](https://doi.org/10.1177/13591053211027652)
- Wadsworth, P., Allen, E., McCormick, M., (2022). Climate, knowledge, comfort related to LGBTQ+ health and healthcare, *Teaching and Learning in Nursing*, Volume 17, Issue 2, Pages 203-209, ISSN 1557-3087, <https://doi.org/10.1016/j.teln.2022.01.009>.
- Wilkerson, J. M., Rybicki, S., Barber, C. A., & Smolenski, D. J. (2011). Creating a Culturally Competent Clinical Environment for LGBT Patients. *Journal of Gay & Lesbian Social Services*, 23(3), 376–394. <https://doi.org/10.1080/10538720.2011.589254>
- Zeeman, L., Sherriff, N., Browne, K., McGlynn, N., Mirandola, M., Gios, L., Davis, R., Sanchez-Lambert, J., Aujean, S., Pinto, N., Farinella, F., Donisi, V., Niedźwiedzka-Stadnik, M., Rosińska, M., Pierson, A., Amaddeo, F., (2019). Health4LGBTI Network , A review of lesbian, gay, bisexual, trans and intersex (LGBTI) health and healthcare inequalities, *European Journal of Public Health*, Volume 29, Issue 5, October 2019, Pages 974–980, <https://doi.org/10.1093/eurpub/cky226>.





Thank You!