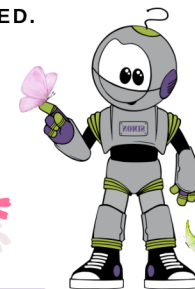




HAYES CHILD DEVELOPMENT CENTER 2025 - 2026 CENTER & COLLEGE CLOSURE

TO RECEIVE EMERGENCY NOTIFICATIONS REGARDING CAMPUS
CLOSURES, DELAYS, OR LOCKDOWNS: PLEASE GO TO THE CPTC
WEBSITE AND LOCATED UNDER CURRENT STUDENT IS THE EMERGENCY
ALERTS.

*INDIVIDUAL DEPARTMENTS MAY ADD DATES AS NEEDED.



CONTACT
INFORMATION
FRONT DESK
253-589-5531

DIRECTOR
253-589-4312

MANAGER:
253-589-4335

EMAIL
HAYES@CPTC.EDU

WEBSITE:
CPTC.EDU/CHILDCARE

JULY 2025

S	M	T	W	T	F	S
		QS 1	2	3	HC 4	5
6	7	8	9	10	11	12
13	14	15	16	17	18	19
20	21	22	23	24	25	26
27	28	29	30	31		

AUGUST 2025

S	M	T	W	T	F	S
					1	2
3	4	5	6	7	8	9
10	11	12	13	14	15	16
17	18	19	20	21	22	23
24	25	26	27	28	29	30
31						

SEPTEMBER 2025

S	M	T	W	T	F	S
	HC 1	QE 2	FD 3	4	5	6
7	8	9	10	11	12	13
14	15	16	17	18	19	20
21	22	23	24	25	HC 26	27
28	QS 29	30				

OCTOBER 2025

S	M	T	W	T	F	S
			1	2	3	4
5	6	7	8	9	10	11
12	13	14	15	16	HC 17	18
19	20	21	22	23	24	25
26	27	28	29	30	31	

NOVEMBER 2025

S	M	T	W	T	F	S
						1
2	3	4	5	6	7	8
9	10	HC 11	12	13	14	15
16	17	18	19	20	21	22
23	24	25	26	HC 27	HC 28	29
30						

DECEMBER 2025

S	M	T	W	T	F	S
	1	2	3	HD 4	HD 5	6
7	8	9	10	11	QE 12	13
14	15	16	17	18	HD 19	20
21	HC 22	HC 23	HC 24	HC 25	HC 26	27
28	HC 29	HC 30	HC 31			

JANUARY 2026

S	M	T	W	T	F	S
				HC 1	2	3
4	QS 5	6	7	8	9	10
11	12	13	14	15	16	17
18	HC 19	20	21	22	23	24
25	26	27	28	29	HC 30	31

FEBRUARY 2026

S	M	T	W	T	F	S
1	2	3	4	5	6	7
8	9	10	11	12	13	14
15	HC 16	17	18	19	20	21
22	23	24	25	26	HC 27	28

MARCH 2026

S	M	T	W	T	F	S
1	2	3	4	5	6	7
8	9	10	11	12	13	14
15	16	17	QE 18	19	20	21
22	23	24	25	HD 26	HD 27	28
29	QS 30	31				

APRIL 2026

S	M	T	W	T	F	S
			1	2	3	4
5	6	7	8	9	10	11
12	13	14	15	16	17	18
19	20	21	22	23	HC 24	25
26	27	28	29	30		

MAY 2026

S	M	T	W	T	F	S
					1	2
3	4	5	6	7	8	9
10	11	12	13	14	HC 15	16
17	18	19	20	21	22	23
24	HC 25	26	27	28	29	30
31						

JUNE 2026

S	M	T	W	T	F	S
	1	2	3	4	5	6
7	8	QE 9	10	HD 11	HD 12	13
14	15	16	17	18	HC 19	20
21	22	23	24	LD 25	PG 26	27
28	29	30				

HC	ALL-DAY HAYES CENTER CLOSED	HD	HALF-DAY FOR STUDENTS - CONFERENCES	FD	FIRST DAY OF CLASS FOR ECEAP	LD	LAST DAY OF CLASS FOR ECEAP	QS	CPTC QUARTER START	QE	QUARTER END	PG	PRESCHOOL GRADUATION
----	-----------------------------------	----	---	----	------------------------------------	----	--------------------------------	----	--------------------------	----	----------------	----	-------------------------