

CLOVER PARK TECHNICAL COLLEGE

BY THE NUMBERS

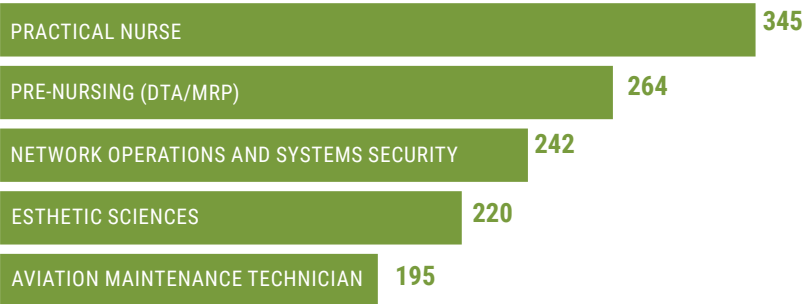
ACADEMIC YEAR 2019-2020*

Source: Institutional Effectiveness & Accreditation
*All data are for the entire academic year.

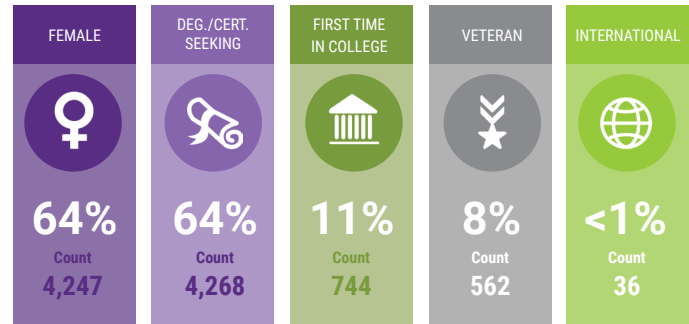
ENROLLMENT

Headcount	Total FTE	State-funded Head Count	State-funded FTE
6,688	4,004	6,185	3,698

HIGHEST ENROLLING PROGRAMS*



STUDENT CHARACTERISTICS



Race	Count	%
White	3,057	46%
Asian	548	8%
Not reported	448	7%
Multi-Racial	650	10%
Hispanic	910	14%
Alaska Native/Am. Indian	53	1%
African American	834	13%
Native Hawaiian/Pac. Islander/Other	154	2%
Other Race	18	0%

*Race demographics do not add up to 100% since optional self-reporting allows for more than one selection.

COMPLETION AWARDS

TOTAL DEGREES & CERTIFICATES: 2,062

Associate of Applied Technology/ Associate of Applied Science -Transfer Degree	544 (26.4%)
Certificate > or = 45 Credits	426 (20.7%)
Certificate < 45 Credits	1,066 (51.7%)
High School Equivalency	19 (0.9%)
Baccalaureate	19 (0.3%)

AAT/AAST (1, T) Certs > or = 45 CR. (2,3)
Certs < 45 CR. (4,9) High School (6,7)

SBCTC Data Warehouse Completion Tables award exit codes:

ENROLLMENT BY SCHOOL

HEADCOUNT %

Basic Skills	1073
School Of Health And Human Development	740
School Of Business And Personal Services	697
School Of Science, Technology, Engineering, And Design	682
School Of Automotive And Trades	445
School Of Nursing	290
School Of Advanced Manufacturing	176
School Of Aerospace And Aviation	166

FINANCIAL AID

Federal Grants	\$7,093,608
State Grants	\$3,254,460
Workforce Development Grants	\$531,227
Direct Stafford Loans	\$3,609,597
Other Scholarships	\$241,446
Foundation Scholarships	\$89,313
Work Study	\$279,908

44%	56%	30%
STUDENTS RECEIVING NEED-BASED FINANCIAL AID IN ELIGIBLE PROGRAMS.*	STUDENTS WHO WORK	STUDENTS WITH CHILDREN

*Only students coded in a program eligible for need based aid

FINANCES

Operating Budget	\$35,196,438
Resident Required Tuition and Fees For 15 credits	\$1,365.65

MISCELLANEOUS

21:1 STUDENT-TO-FACULTY RATIO	13 AVERAGE CLASS SIZE	28 MEDIAN AGE	77% EMPLOYMENT RATE, PROFESSIONAL TECHNICAL PROGRAMS
---	---------------------------------	-------------------------	--

FACULTY/STAFF DEMOGRAPHICS

FULL-TIME FACULTY: 62
PART-TIME FACULTY: 44

FULL-TIME STAFF: 55
PART-TIME STAFF: 1



FULL-TIME FACULTY: 66
PART-TIME FACULTY: 59

FULL-TIME STAFF: 130
PART-TIME STAFF: 4

TOTALS

FACULTY: 233 STAFF: 190 FEMALE: 62% FACULTY OF COLOR: 18% STAFF OF COLOR: 25%