

# I-BEST

## Nursing Assistant-Certified

Students learn the basics of nursing, leading to employment as a Nursing Assistant – Certified (NA-C) or earn priority registration into our Licensed Practical Nurse (LPN) or Registered Nurse (RN) programs when all other pre-requisites are met.

The Nursing Assistant – Certified program takes 2 quarters to complete.

### CN-A Employment & Wage Earnings

**Employment Options:** NA-C's assist licensed health care providers with basic care of patients in hospitals, convalescent homes, and private residences and other medical facilities.

### **Wage Earnings:**

Nursing Assistant – Certified	\$14.00 hourly*
Licensed Practical Nurses	\$22.50 hourly*
Registered Nurses average	\$36.70 hourly*

### **What is IBEST?**

IBEST gives adult education students access to technical programs by combining basic skills instruction with career preparation. IBEST offers a team approach that supports student development.

### **I-Best is perfect for students who...**

- are first-timers in college
- are returning to school after long absences
- want High School Equivalency (formerly GED®) and technical training together
- have attained a GED® or high school completion, but appreciate additional supports in the classroom
- are adult language learners
- want to succeed in college

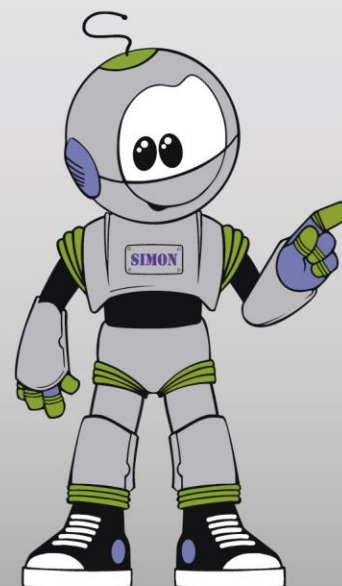
**New Cohort Starts Soon.  
Contact Now for Information and Sign-Up.**



### **Want to Learn More?**

---

**Patricia Lange**  
**IBEST Program**  
**Specialist**  
**253.589.5524: Office**  
**253-589-5702: Message**  
**Patricia.lange@cptc.edu**  
**Bldg. 10, Office # 101**



**CLOVER PARK**  
TECHNICAL COLLEGE